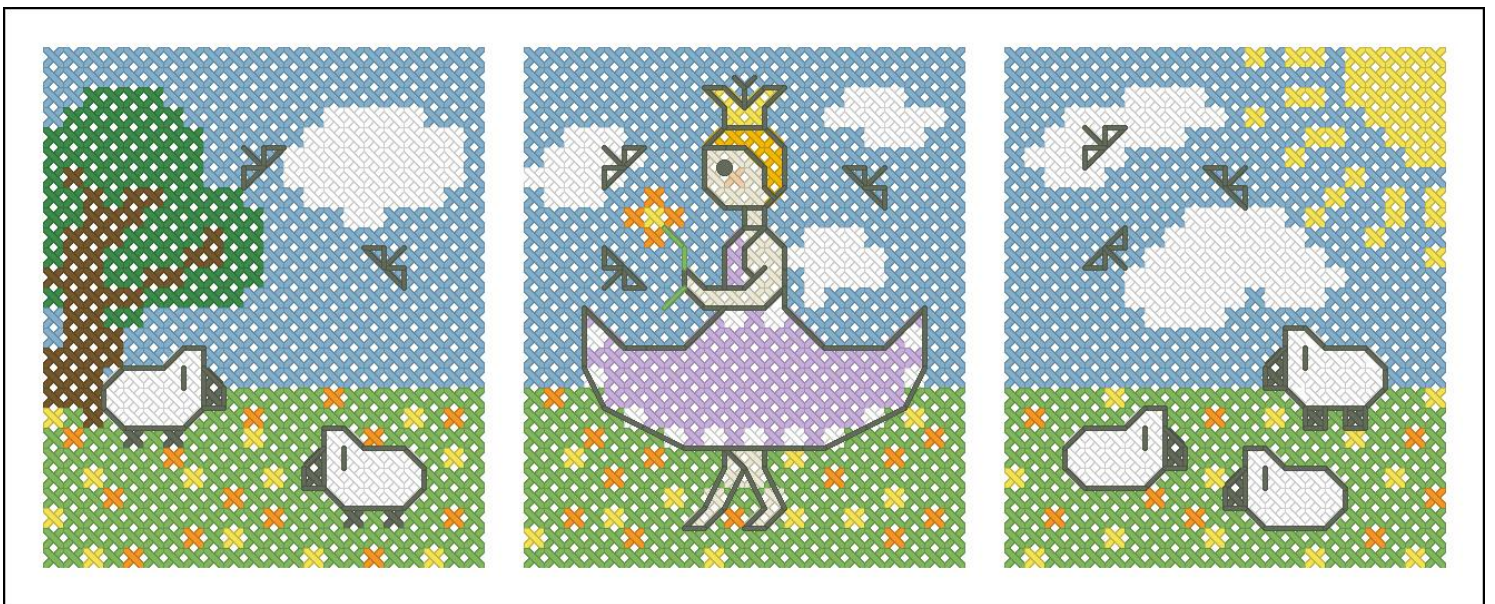
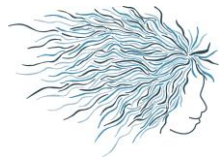


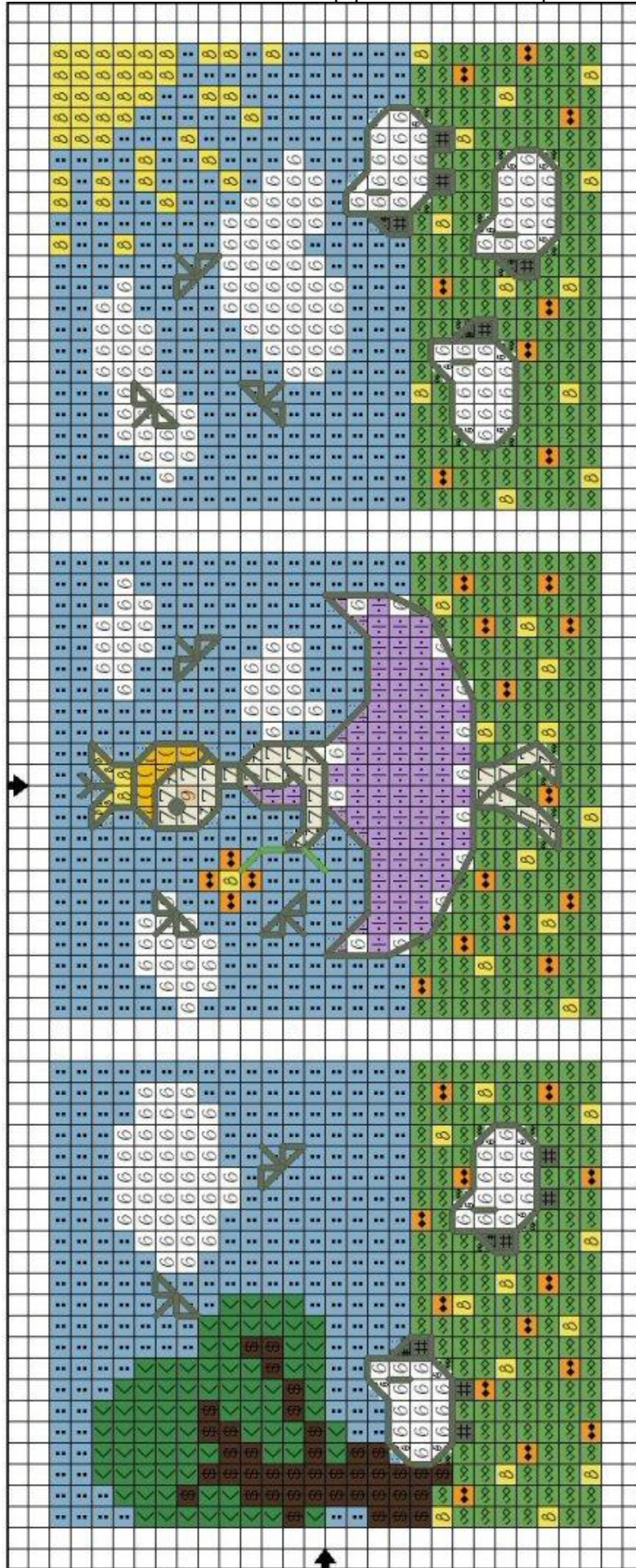
## Freebee Prinsesje Drieluik





NenneDesign

Ik heb van deze patroontjes koelkastmagneetjes gemaakt.  
Je borduurt ze op plastic canvas en plakt er een magneetje achter.



©Copyright 2006 NenneDesign

**Stitches Used for Small Stitches**

Symbol	Strands	Type	Number	Color
■	2	DMAC	210	Lavender-DMO
■	2	DMAC	433	Brown-DMO
■	2	DMAC	535	Asli Gray-VY-LT
■	2	DMAC	701	Christmas Green-LT
■	2	DMAC	703	Chartreuse
■	2	DMAC	726	Opaz-LT
■	2	DMAC	741	Tangerine-DMO
■	2	DMAC	813	Blue-LT
■	2	DMAC	945	Turkey
■	2	DMAC	972	Canary-DMK
■	2	DMAC	3770	Turkey-VY-LT
■	2	DMAC	85200	Snow-White

**Stitches Used for French Knots**

Symbol	Strands	Type	Number	Color
●	1	DMAC	535	Asli Gray-VY-LT

**Stitches Used for Back Stitches**

Symbol	Strands	Type	Number	Color
—	1	DMAC	535	Asli Gray-VY-LT
—	1	DMAC	703	Chartreuse